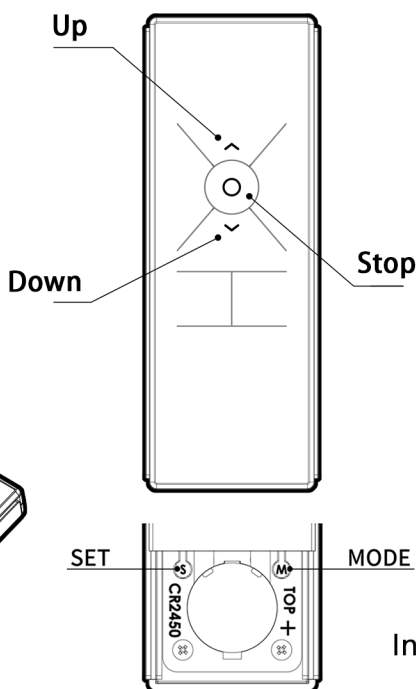
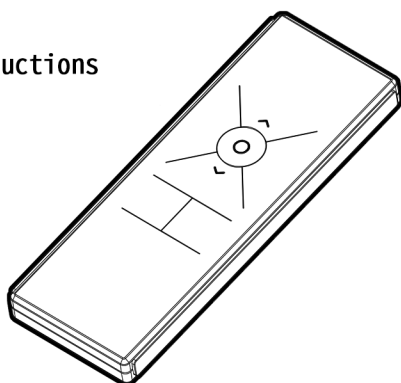


Motorized Roman Shade Instructions

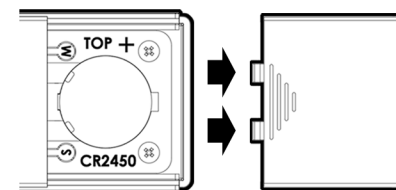
Contents

- 1-1 Set or Modify Upper Limit
- 1-2 Set or Modify Lower Limit
- 2-1 Add Remote Control
- 3-1 Clear Pairing Code
- 4-1 Connect External Manual Switch
- 5-1 How to Replace the Battery
- 5-2 Product Specifications
- 5-3 Quick Setup Guide
- 5-4 Remote Holder Instructions



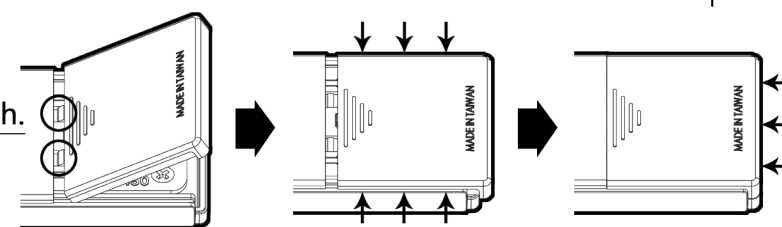
How to Open the Battery Cover

⚠ Slide the cover out.



How to Reattach the Battery Cover

- 1 Insert the latch into the slot.
- 2 Align the cover with the track.
- 3 Slide it back into place.

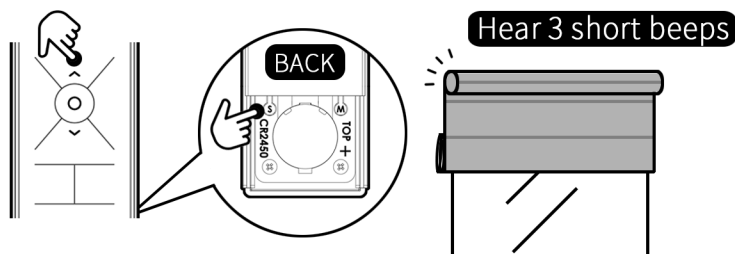


Pre-Setup Checklist:

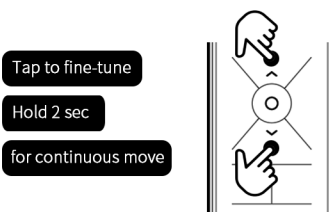
- 1 Always set the upper limit before setting the lower limit.
- 2 Ensure the shade moves in the correct direction—pressing “Up” should raise the shade, and “Down” should lower it. If the directions are reversed, refer to section 3-1 to adjust the motor direction.

1-1 Set or Modify Upper Limit

STEP-1 Press **SET + UP**. Three short beeps indicate entry into upper limit setting mode.

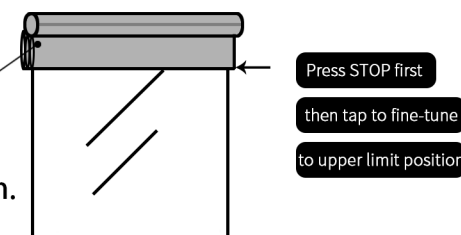


STEP-2 Press **UP** or **DOWN** to move the cellular shade to the desired upper limit position.



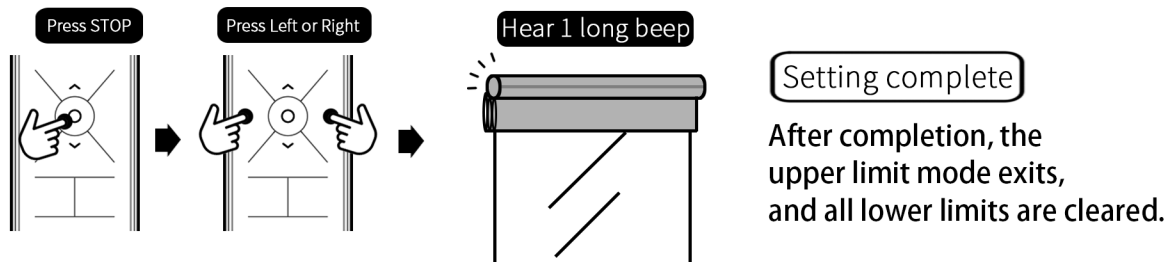
Note

To prevent damage, press **STOP** before reaching the upper limit, then fine-tune to the exact position.



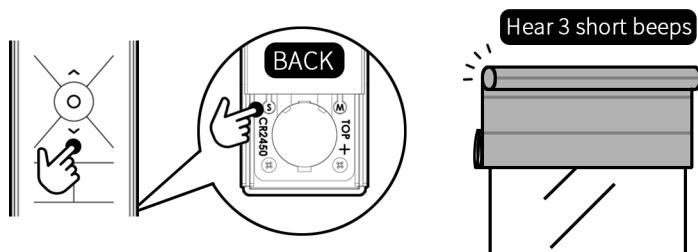
Motorized Roman Shade Instructions

STEP-3 When the desired position is reached, press **STOP**, then press **Left or Right** to confirm. A long beep indicates the setting is complete.

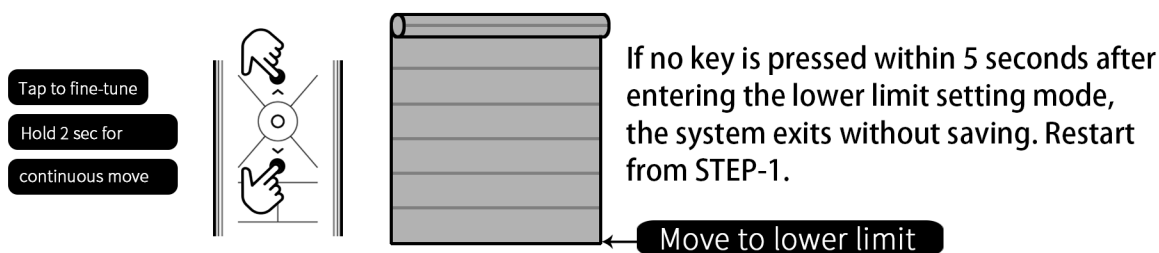


1-2 Set or Modify Lower Limit

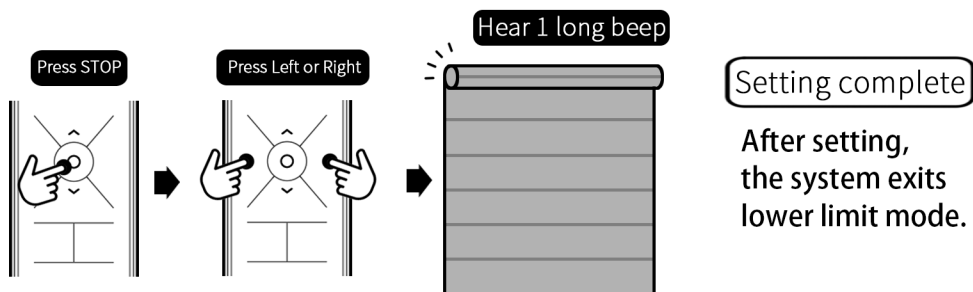
STEP-1 Press **SET + DOWN**. Three short beeps indicate entry into lower limit setting mode.



STEP-2 Press **UP** or **DOWN** to move the roman shade to the desired lower limit position.



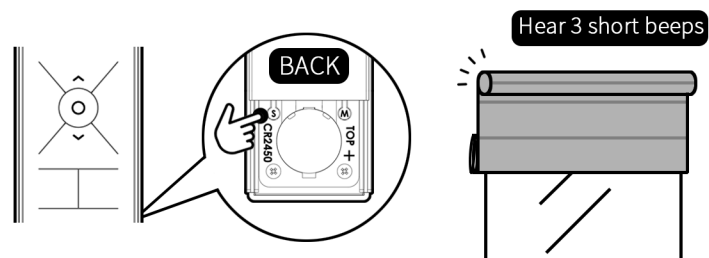
STEP-3 When the desired position is reached, press **STOP**, then press **Left or Right** to confirm. A long beep indicates the setting is complete.



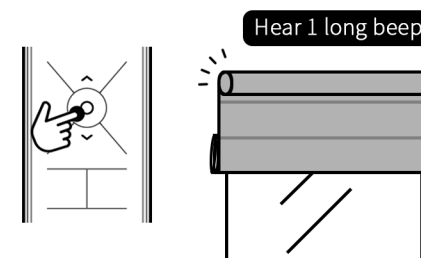
Motorized Roman Shade Instructions

2-1 Add Remote Control

STEP-1 Hold **SET** until 3 short beeps sound — enter setup mode.



STEP-2 Press **STOP** on the new remote.
A long beep confirms pairing is complete.



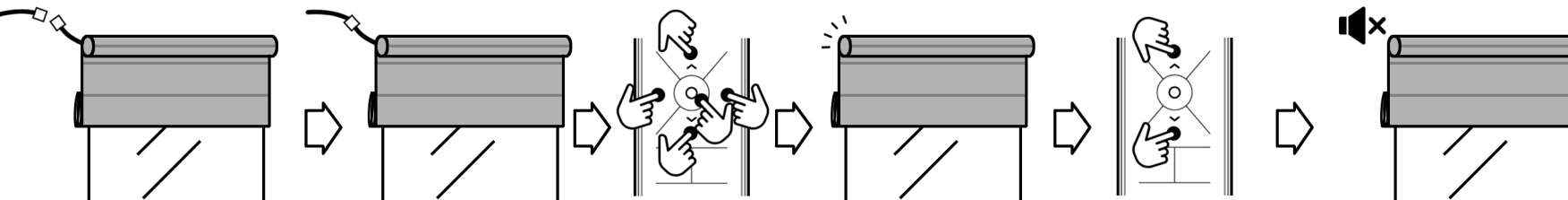
Pairing complete

After pairing, don't press any key.
Wait 5 seconds, motor vibrates
and exits setup mode.

3-1 Clear Pairing Code

STEP-1 Unplug the motor. Wait 15 seconds, then plug it back in. Within 8 seconds, press **UP + STOP + DOWN + Left/Right** together. The buzzer will start beeping. Within 5 seconds, press **UP + DOWN** together. One long beep then stops—clearing complete.

Unplug the motor. → Wait 15 seconds. → Plug it back in. → Within 8 seconds, press 4 keys → Buzzer starts beeping. → Within 5 seconds, press 2 keys → Buzzer gives one long beep and stops.



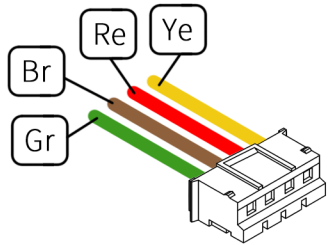
Code Cleared

Only this remote remains
paired. If no new code is
entered, previous codes
will stay active.

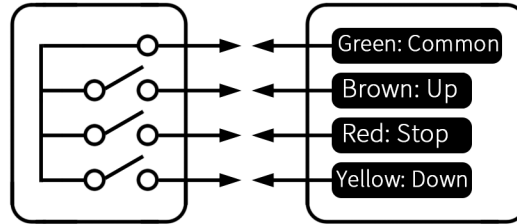
Motorized Roman Shade Instructions

4-1 Connect External Manual Switch

Follow same steps as remote control setup (see 1-1 to 1-3).



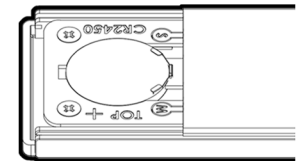
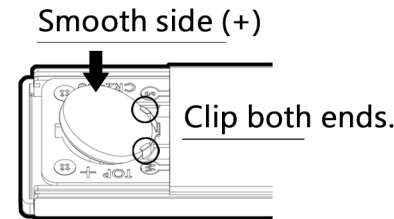
System control terminal Manual switch wire



Tap briefly to operate.
Do not short-circuit continuously.

5-1 How to Replace the Battery

- 1 Face the smooth side (+) up. Align both ends with the clips and insert at an angle.
- 2 Done.



5-2 Specifications

Battery: CR2450 3V (non-rechargeable lithium)
Size: L13cm × W4.8cm × H1.1cm
Standby Current: <1uA
Modulation: OOK
Encoding: Fixed internal code
Frequency: 433.92MHz
Antenna: On-board, Gain = 0 dBi
Weight (with battery): 66g

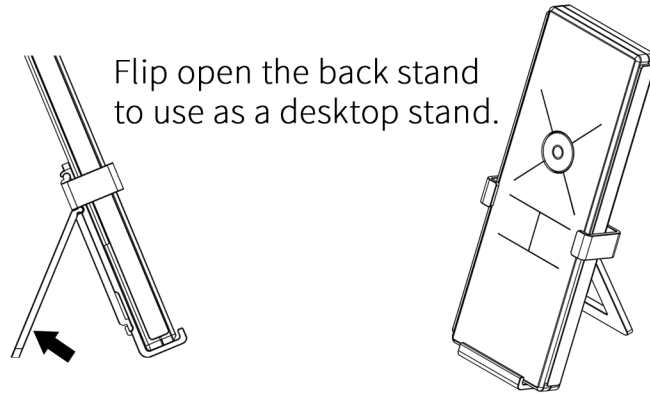
5-3 Quick Setup Guide

Set upper limit: SET + UP → Adjust → STOP → Confirm with Left or Right
Set lower limit: SET + DOWN → Adjust → STOP → Confirm with Left or Right
Add remote: SET → (Remote 2) STOP
Clear code: UP + STOP + DOWN + Left or Right → UP + DOWN

Motorized Roman Shade Instructions

5-4 Remote Holder Instructions

Stand



Wall Mount

Stick the included double-sided tape on the back, then attach to the desired wall location.

Apply tape here

